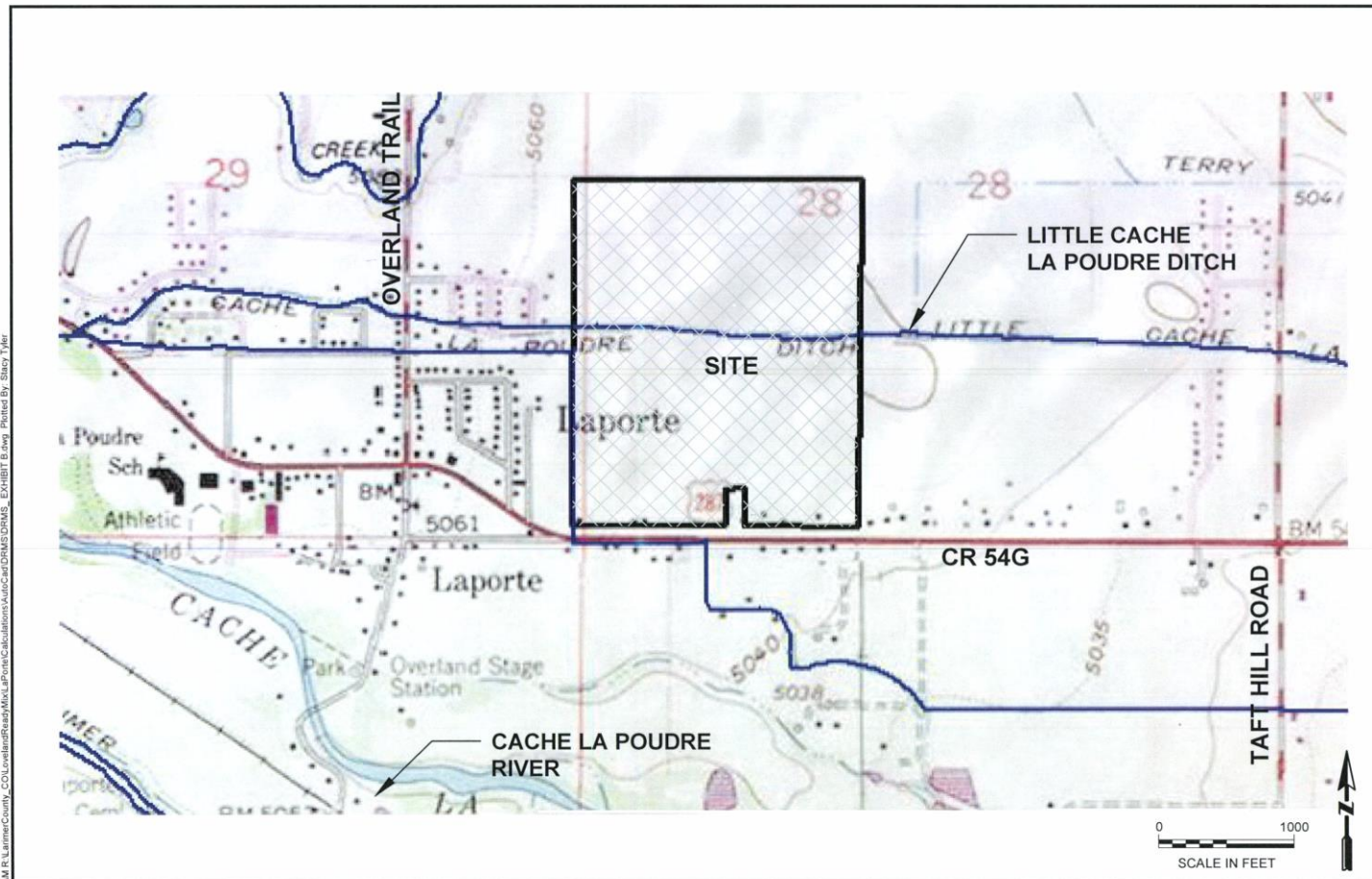


Loveland Ready-Mix (LRM) Permit Application

The background image shows a vast industrial or construction site. In the foreground, a large yellow tractor is parked on a dirt surface. To the left, a complex system of conveyor belts is visible, transporting material across the site. Large mounds of earth or aggregate material are scattered throughout the landscape. The sky is clear and blue, and distant hills are visible in the background.

Air Quality
Ground Water
Reclamation

Proposed LRM Project Site



PROJECT: 360100 TASK: 003 DATE: 9/1/2017
PREPARED BY:

EXHIBIT B

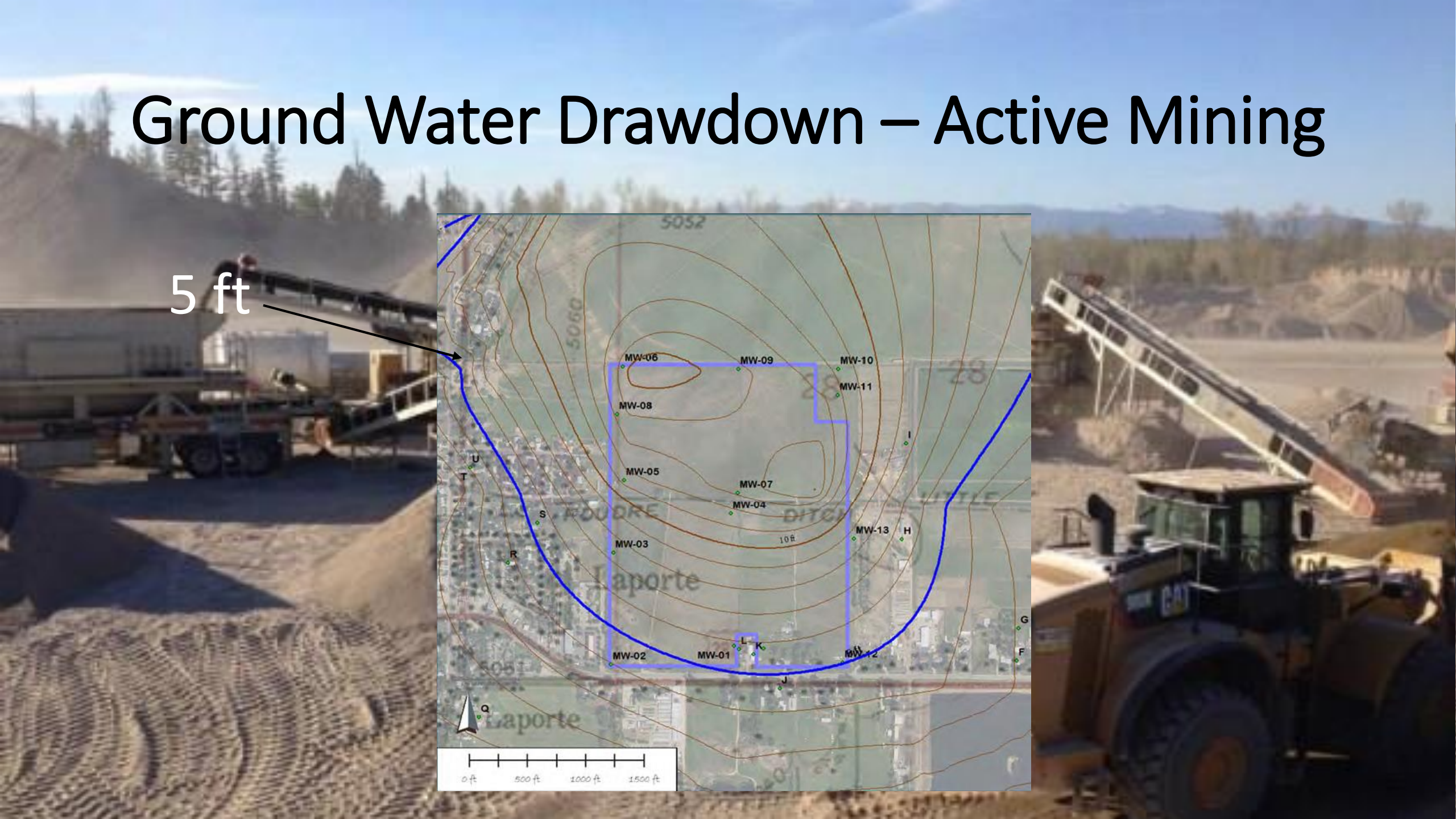
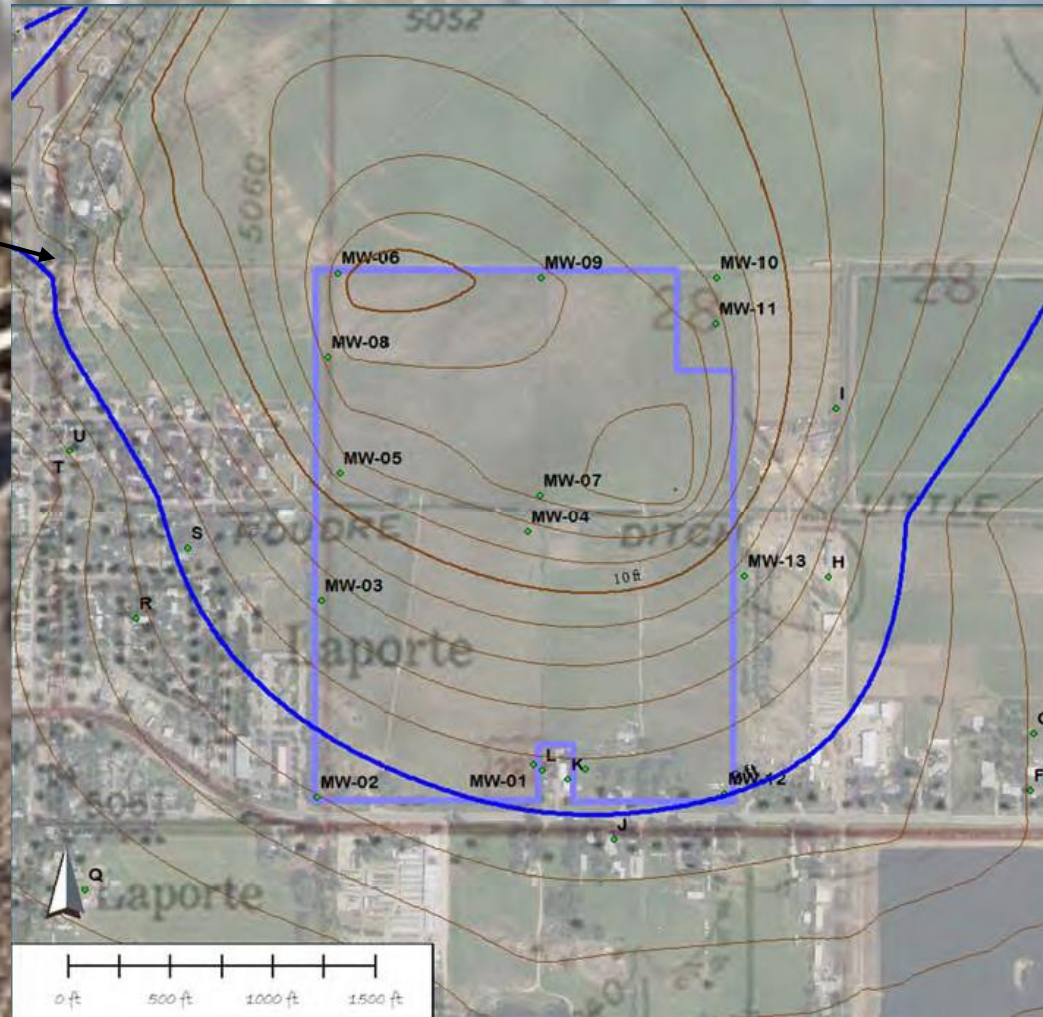
PREPARED FOR:
LOVELAND

Particulate Emissions Sources

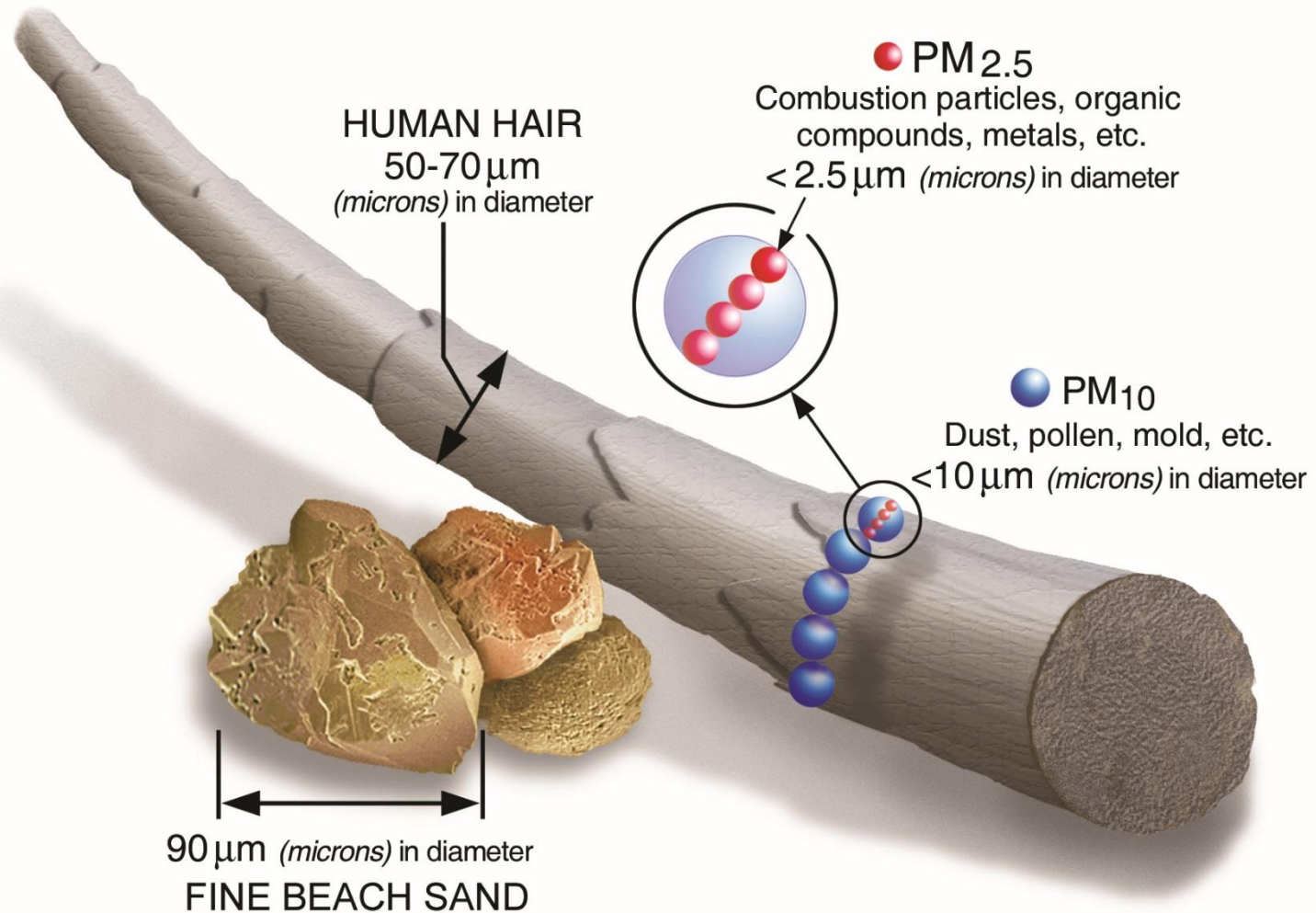


Ground Water Drawdown – Active Mining

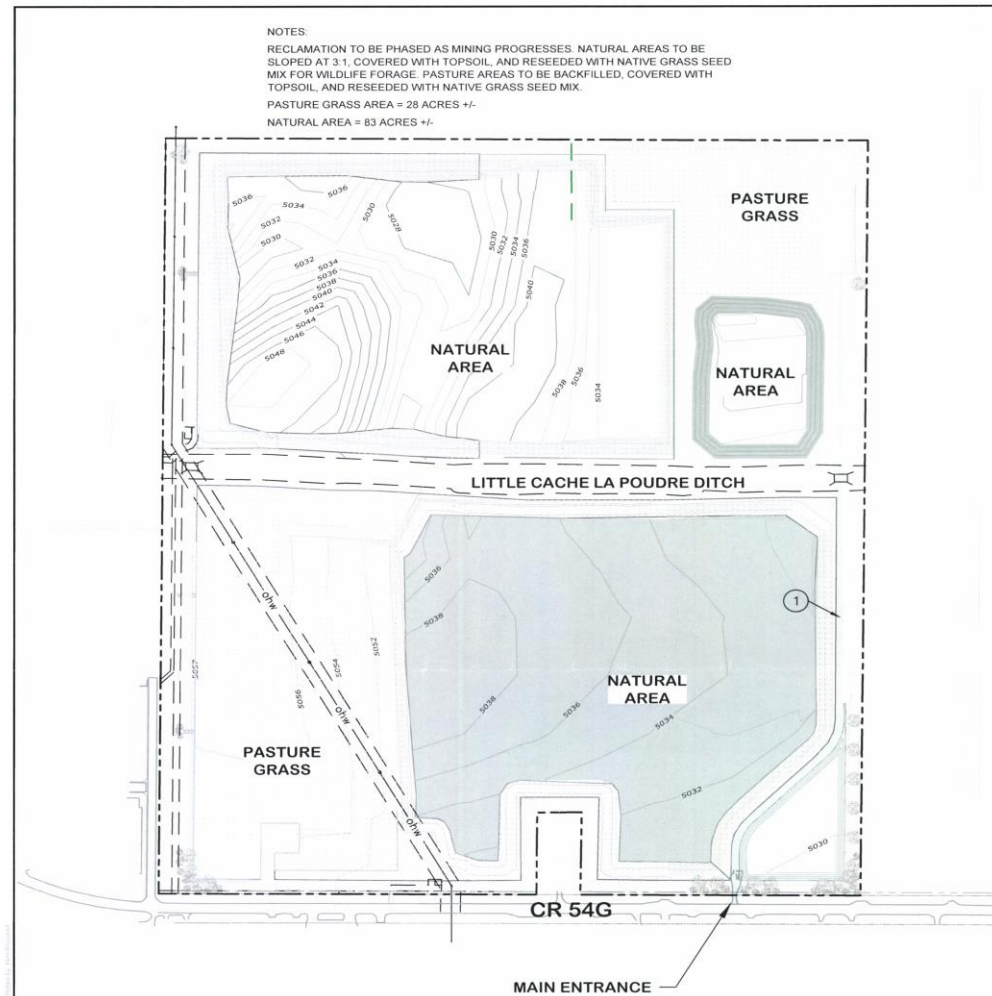
5 ft



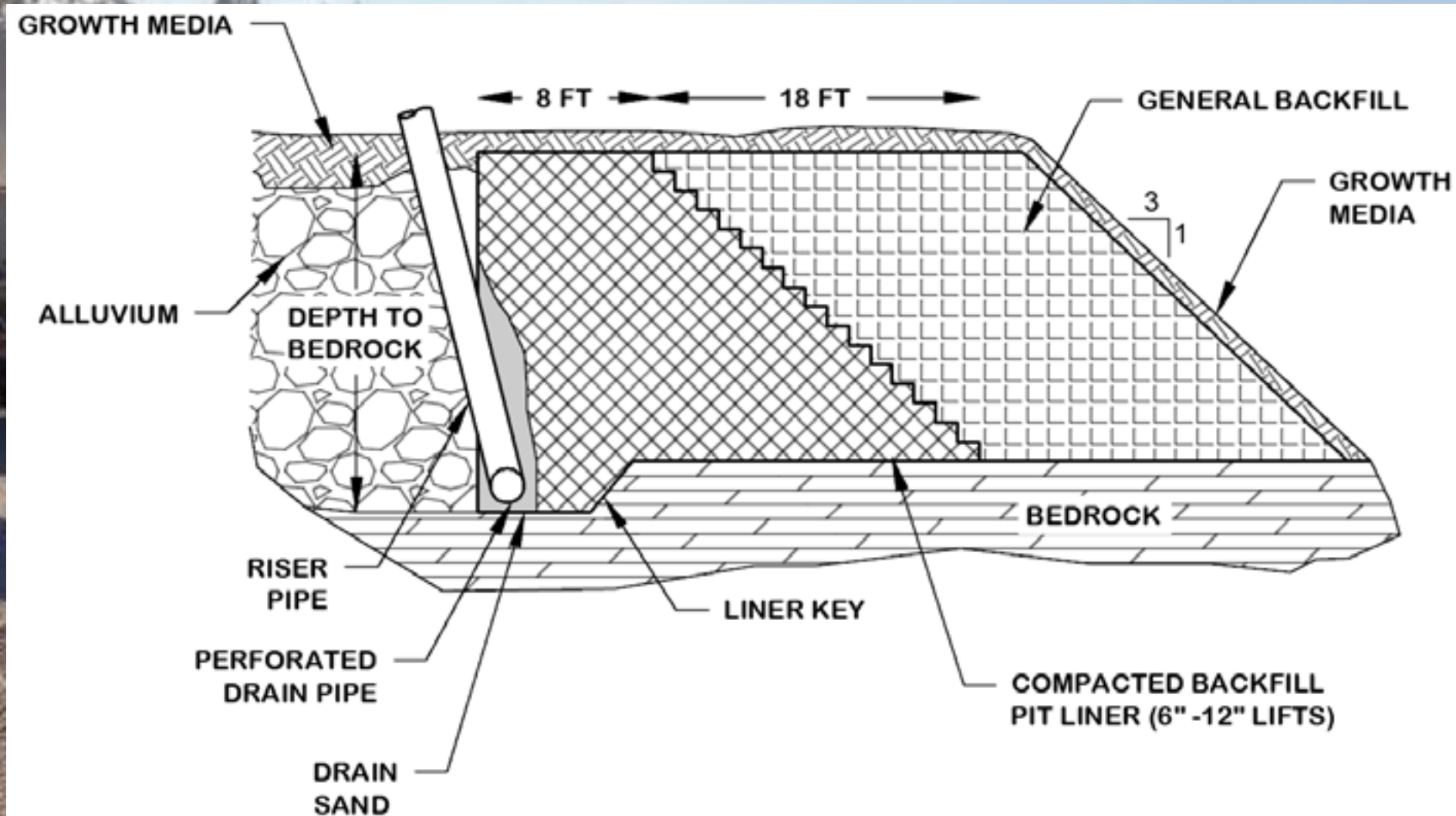
Health Impacts of Particulates



Reclaimed Pits



Reclamation Pit Perimeter Drain



Questions/Comments

